



DRYDEN

GOLD CORP

TSXV: DRY | OTCQB: DRYGF
WWW.DRYDENGOLD.COM

MAY 2025

Acknowledgements & Forward-Looking Statements

Dryden Gold Corp acknowledges all Indigenous Peoples and that it is operating on the traditional homelands of the Wabigoon Lake Ojibway Nation and Eagle Lake First Nation.

Certain statements contained herein constitute “forward-looking statements” within the meaning of the applicable Canadian securities legislation. These forward-looking statements are based on current expectations, estimates and projections about the Canadian mining and mineral exploration industry based on management’s beliefs and certain assumptions made by management. Readers are cautioned that such forward-looking statements are not guarantees of future performance and are subject to risks, uncertainties and assumptions that are difficult to predict and the actual results and performance of Dryden Gold Corp. (the “Company”) may differ materially from the results implied by such statements. Readers are cautioned not to place undue reliance on any forward-looking statements. Unless otherwise required by law, the Company also disclaims any obligation to update its view of any such risks or uncertainties or to announce publicly the result of any revisions to the forward-looking statements made here.

This document contains proprietary information that is the property of Dryden Gold Corp. Neither this document, nor the proprietary information contained herein, shall be published, reproduced, copied, disclosed or used for any other purpose, other than the review and consideration of this document.

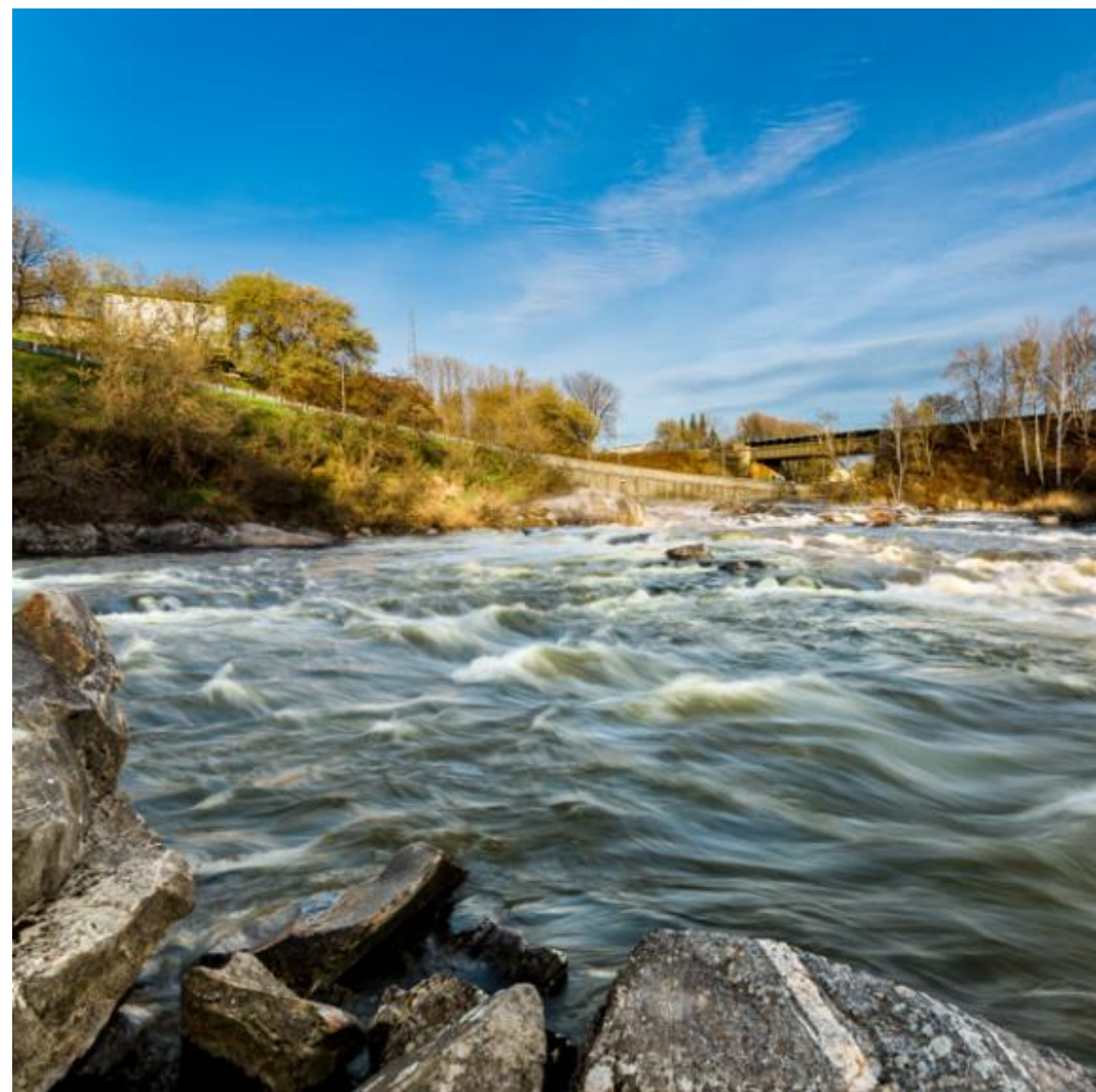
This presentation is not an offer, nor the solicitation of an offer to buy any securities. Such an offer, if made, will be made only through a prospectus or other such document issued in accordance with applicable securities laws, and other applicable laws, rules and regulations., Or pursuant to the applicable exemption from the requirement to deliver a prospectus, in accordance with applicable laws.

Historical statements contained in this document regarding past activities should not be taken as a representation that such trends or activities will continue in the future. In particular, historical results should not be taken as a representation that such trends will be replicated in the future. No statement in this document is intended to be nor may be construed as a profit forecast.

An investment in the Company is speculative and involves substantial risk and is only suitable for investors that understand the potential consequences and are able to bear the risk of losing their entire investment. Investors should consult with their own legal, tax and financial advisors with respect to all such risks before making an investment.

The Company is in the early stage of development and has a limited operational history, making it difficult to accurately predict business operations. The Company has limited resources and may run out of capital prior to becoming profitable. The Company may fail and investors may lose their entire investment.

The technical disclosure in this presentation has been approved by Maura J. Kolb, M.Sc., P.Geo. a Qualified Person as defined by National Instrument 43-101 of the Canadian Securities Administrators.



Key Value Drivers



Experienced Management

History of **success** in navigating M&A
Technical team has extensive regional experience



Investment Upside

High-grade gold across the entire Dryden District
Limited drilling – 30,000 meters
System has never been drilled tested at depth
Regional Greenfield targets at Hyndman & Sherridon
Strategic investment from Centerra Gold

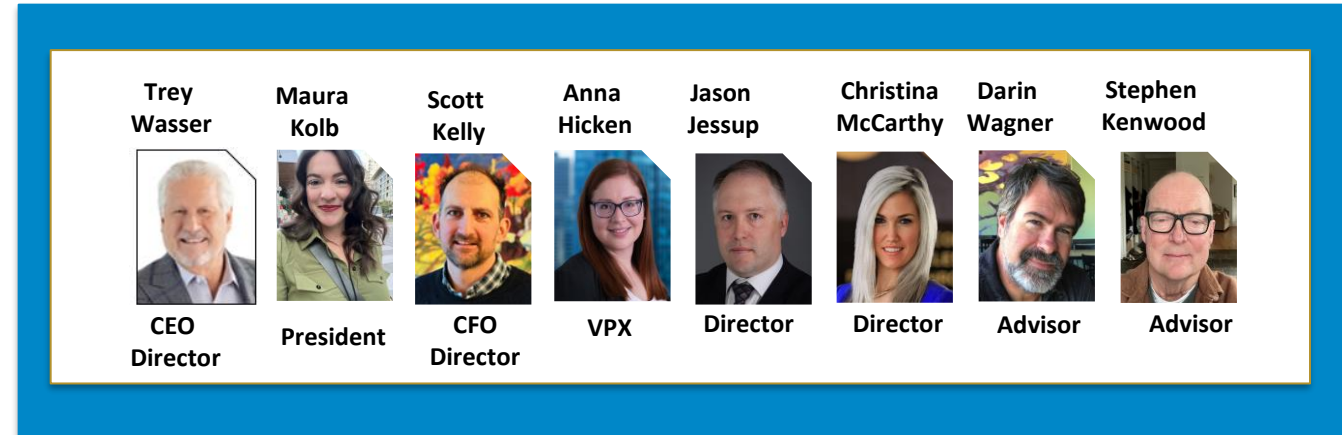


Favourable Mining Jurisdiction

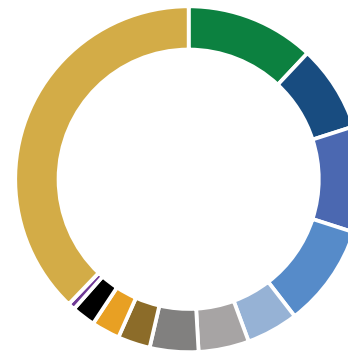
Excellent infrastructure, including grid power
Major highway access and logging roads
Year-round drilling
Significant tax benefits and government grants
Collaborative relationships with First Nations communities

DRYDEN

GOLD CORP



MAJOR SHAREHOLDERS



Other Institutions	12.00%
Management & Insiders	7.57%
Centerra Gold Inc.	9.99%
Alamos Gold (NYSE-AGI)	14.35%
EuroPac Gold Fund	4.55%
Medalist Capital	4.26%
Delbrook Capital	4.26%
Dynamic Funds	2.83%
Eric Sprott	2.49%
Rob McEwen	2.08%
Robert Quartermain	0.62%
Public Float	35.00%

SHARE STRUCTURE

Trading Symbols As at May 5, 2025	TSXV: DRY OTCQB: DRYGF
Current Issued and Outstanding	160,342,519
Warrants Outstanding	52,699,986
ESOP Options Outstanding	8,800,000
Fully Diluted	221,842,505
Cash Balance	\$4,660,000

NEWSLETTER WRITER COVERAGE

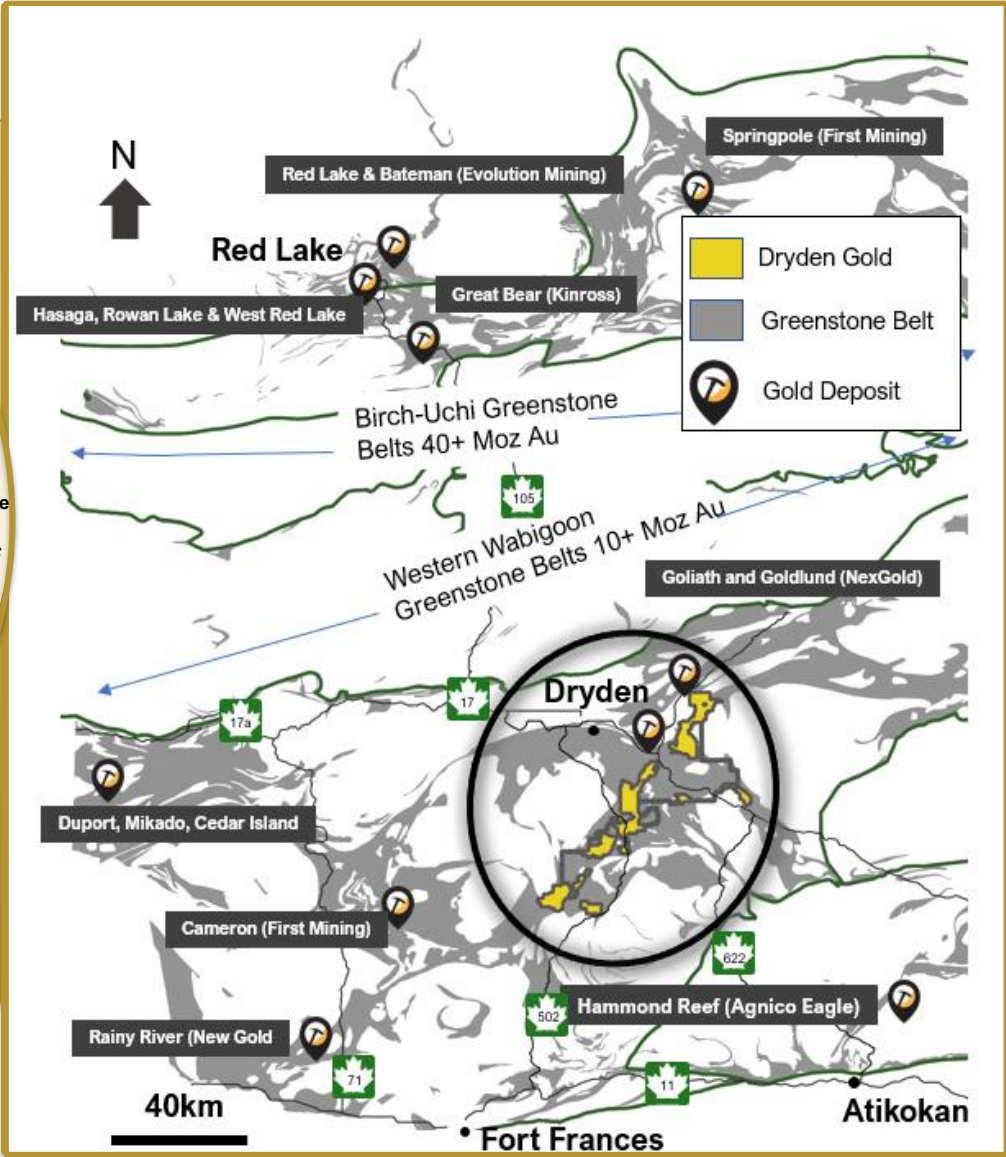
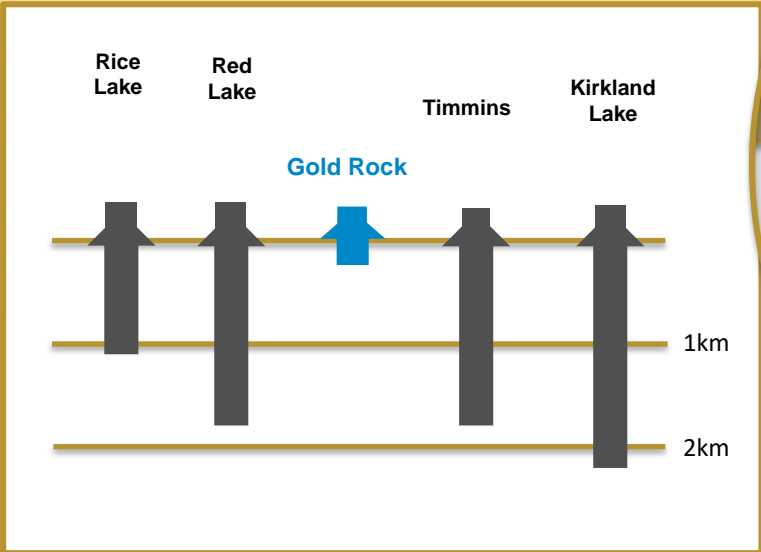
JEFF CLARK
[The Gold Advisor](#)

BRIEN LUNDIN
[The Gold Newsletter](#)

CHEN LIN
[Chen's Stock Picks](#)

Prolific Gold Region | Under Explored in the Dryden Gold District

Archean Lode Gold Mines Camps Central Canada



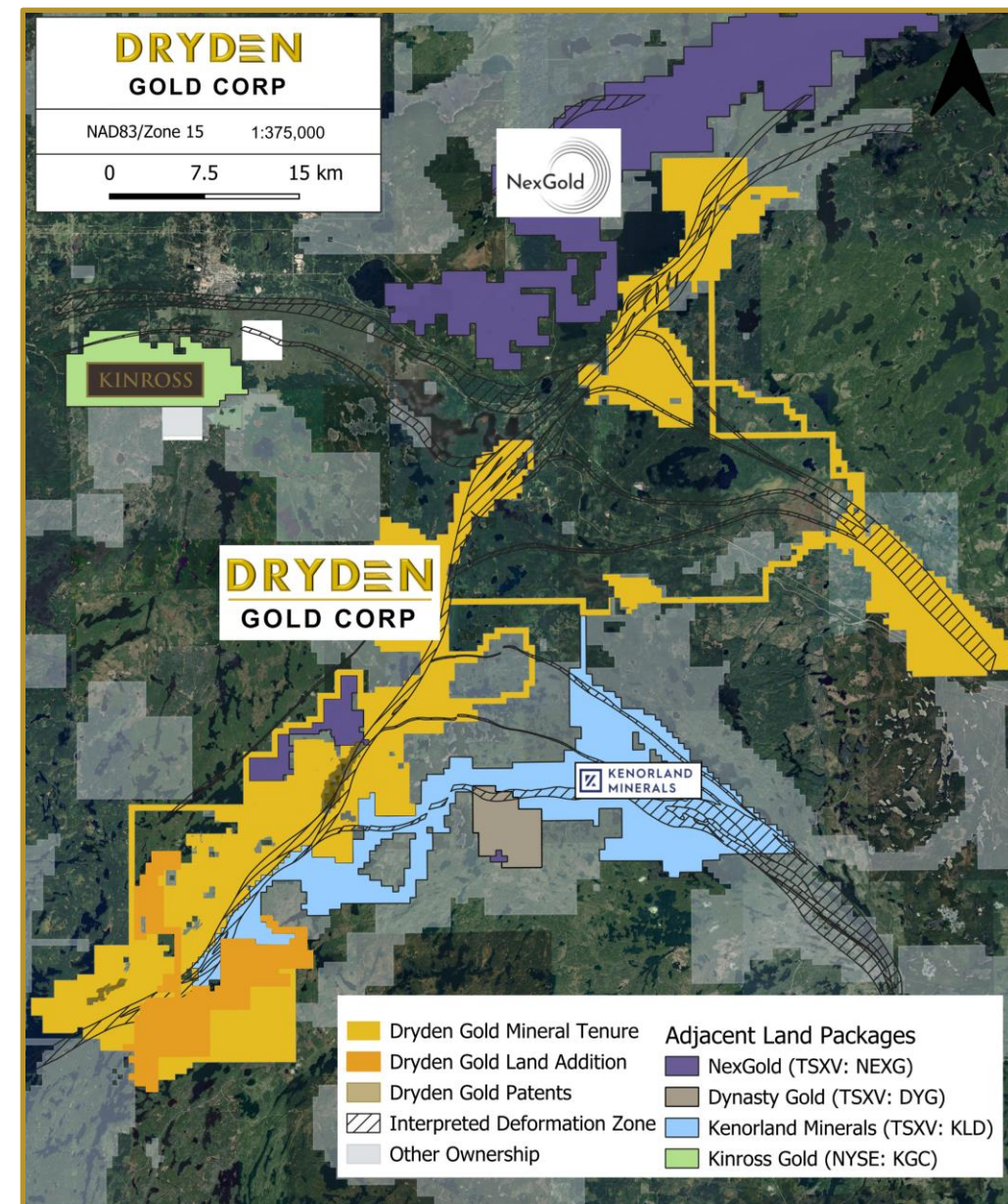
Strategic Land Package

- ▲ Over 702 km² (70,250 hectares) consolidated by Dryden Gold Corp.
- ▲ Excellent infrastructure – Roads (Trans-Canada Hwy), power & labour.
- ▲ 50 km covering regional gold bearing MDdz structure (Manitou-Dinorwic deformation zone).
- ▲ Limited exploration - only **33,200 meters** of historic drilling district-wide at shallow depths.

The Neighborhood

- ▲ **Kinross, NexGold Mining (*Treasury Metals*)**, Kenorland Minerals and **Dynasty Gold** active in the Dryden Gold District.
- ▲ **NexGold Mining** has defined a **3M ounce** low-grade resource in the Dryden Gold District.

DRYDEN
GOLD CORP



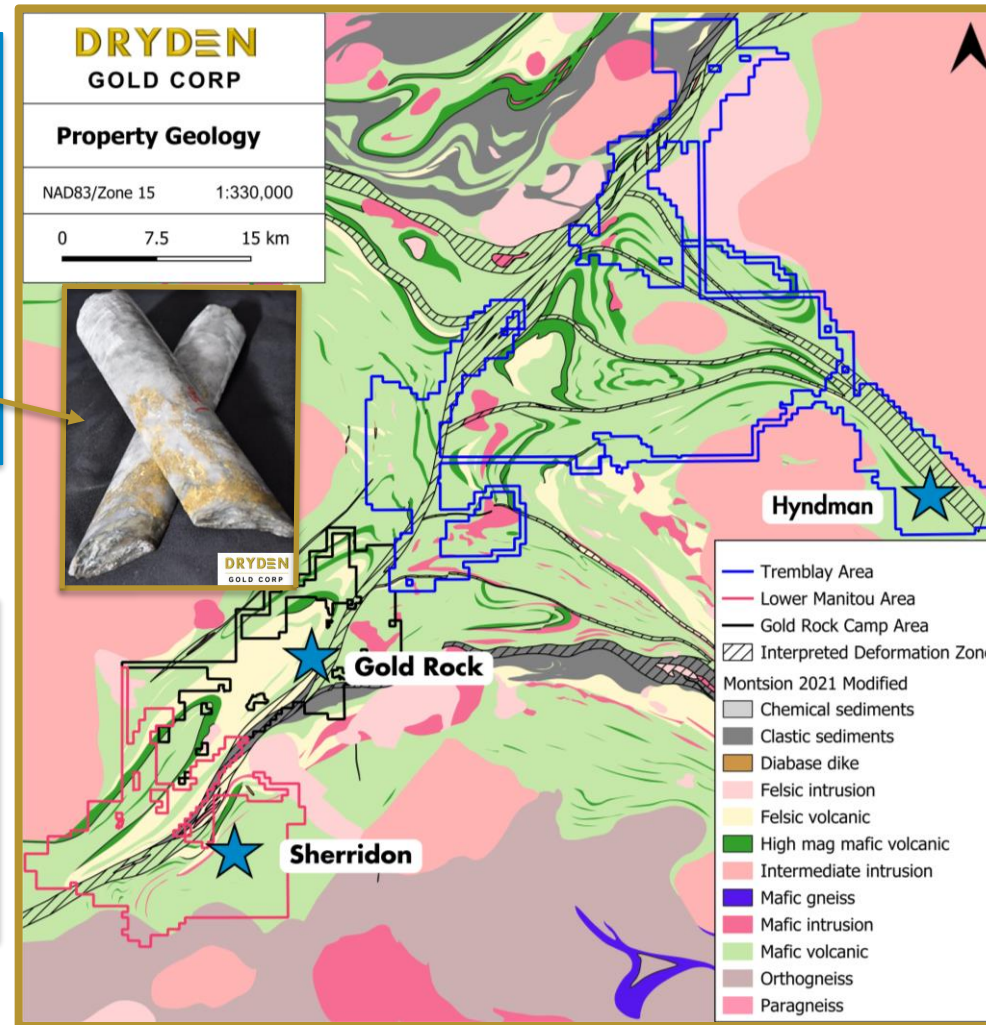
District Scale | Near Surface High-Grade Gold Across Property

Gold Rock Camp Drill Highlights

- ▲ 30.72 g/t gold over 5.70 meters
- ▲ 15.17 g/t gold over 6.95 meters
- ▲ 15.40 g/t gold over 6.10 meters
- ▲ 26.11 g/t gold over 3.16 meters, including 79.80 g/t gold over 0.33 meters
- ▲ 3,497.0 g/t gold over 8.50 meters *historic drill hole* including 53,700 g/t gold over 0.55 meters

Sherridon Drill Highlights

- ▲ 7.70 g/t gold over 3.00 meters *historic drill hole* including 46.00 g/t gold over 0.50 meters
- ▲ 15.40 g/t gold over 5.50 meters *historic drill hole* including 83.10 g/t gold over 1.00 meters



Hyndman Field Samples

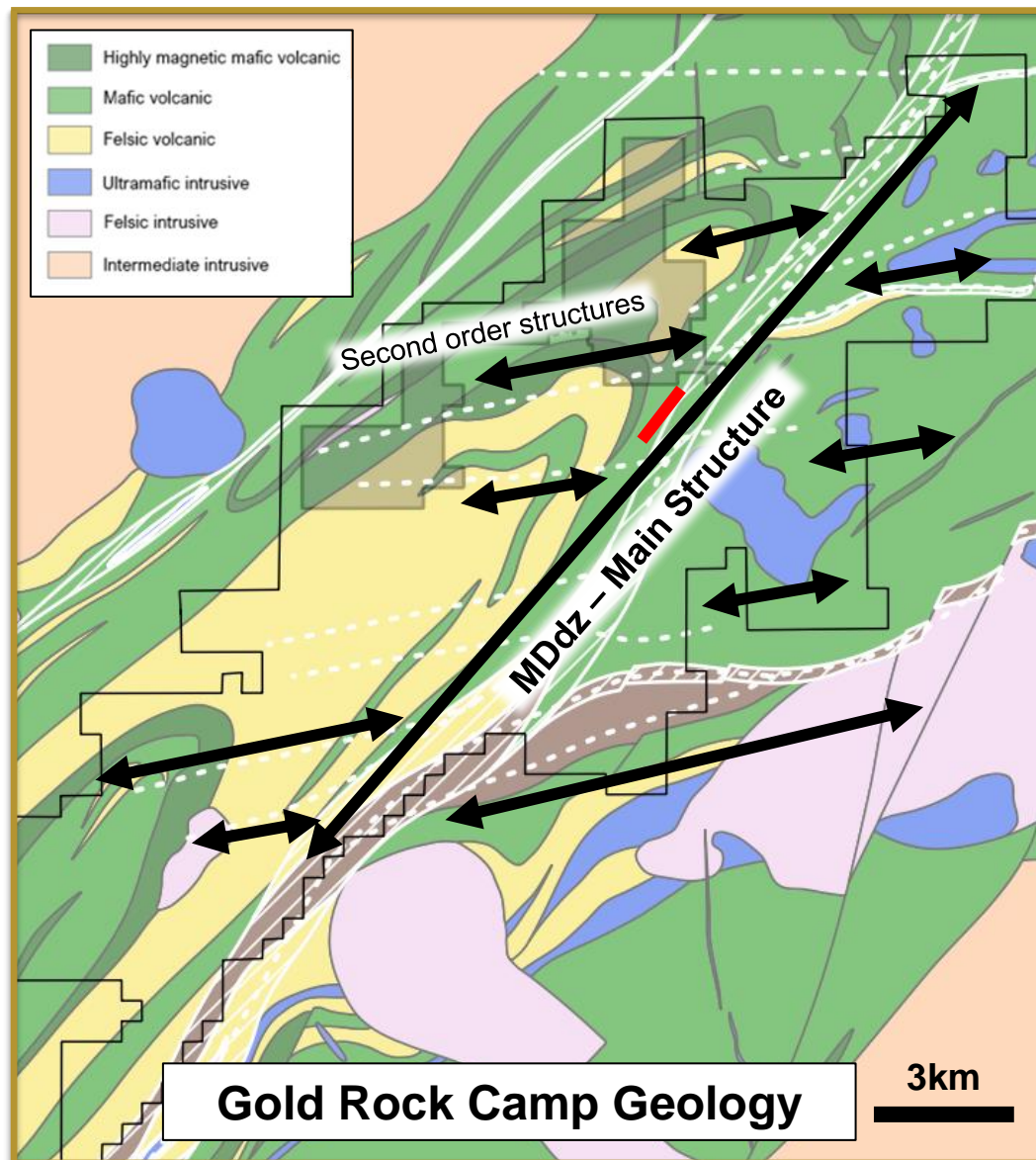
- ▲ 34.80 g/t gold grab sample 2024
- ▲ 13.00 g/t gold grab sample 2023
- ▲ 12.30 g/t gold grab sample 2023
- ▲ 10.90 g/t gold grab sample 2023
- ▲ 6.41 g/t gold grab sample 2024

Sherridon Field Samples

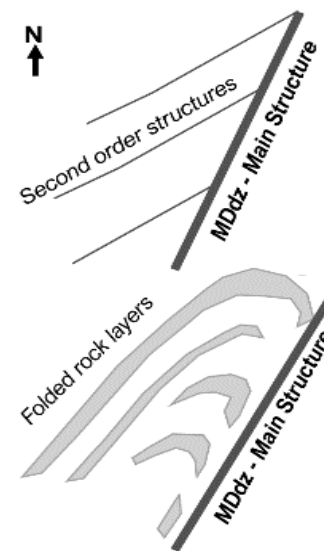
- ▲ 617.00 g/t gold grab sample (historic)
- ▲ 184.50 g/t gold grab sample (historic)
- ▲ 123.00 g/t gold grab sample (historic)
- ▲ 122.50 g/t gold grab sample (historic)

Gold Rock Camp

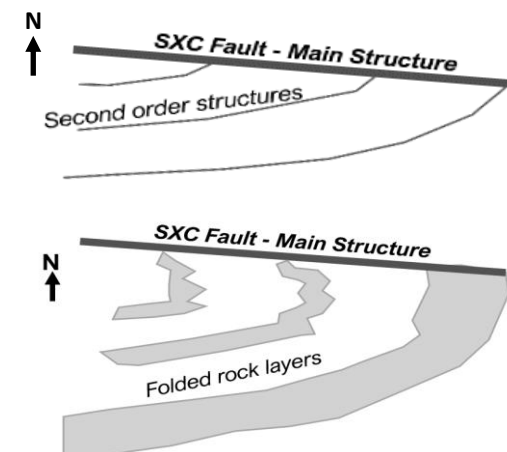
Similar Geological Setting to Red Lake



Dryden Gold Corp. Gold Rock Area Geology



Red Lake Mine Geology



Similar geological setting, rock types and dykes with regional folding.

Confirmed – Through mapping, geophysics and drilling.

Structural geometry – gold bearing shear corridor with secondary mineralized splay structures & dykes.

Confirmed – High-grade gold along 50 km

deformation zone and confirmation that high-grade structures are related to secondary structures and dykes.

Favorable geological gold traps for high-grade shoots.

Confirmed – Drilling known structural

intersections, shear zones and folds intersected three new high-grade structures.

Near surface high-grade free gold in an Archean setting.

Confirmed – Added new high-grade structures with shallow drilling.

DRYDEN

GOLD CORP

Gold Rock Camp | Exploration Objectives

2024 Program



1 EXPANDED MINERALIZED **FOOTPRINT** OF GOLD SYSTEM



2 CONFIRMED ORIENTATION, STRUCTURAL CONTROLS AND **EXPANDED KNOWN** HIGH-GRADE STRUCTURES



3 DISCOVERED **THREE NEW HIGH-GRADE** STRUCTURES MINERALIZED FOOTPRINT OF GOLD SYSTEM



4 OUTLINED **NEW HIGH-GRADE TARGETS** ACROSS THE PROPERTY AS PART OF THE **DISTRICT SCALE POTENTIAL**

2025 Program



1 GROW **THE ELORA GOLD SYSTEM** ON STRIKE TESTING NEW STRUCTURAL INTERSECTIONS



2 EXPAND **HIGH-GRADE MINERALIZATION** DOWN PLUNGE AT **THE JUBILEE ZONE** GOLD ROCK



3 TEST **NEW TARGETS** ALONG STRIKE GOLD ROCK

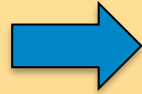


4 INVESTIGATED HIGHLY PROSPECTIVE **REGIONAL TARGETS**

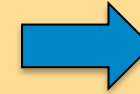


Gold Rock | Targeting High-Grade Structures

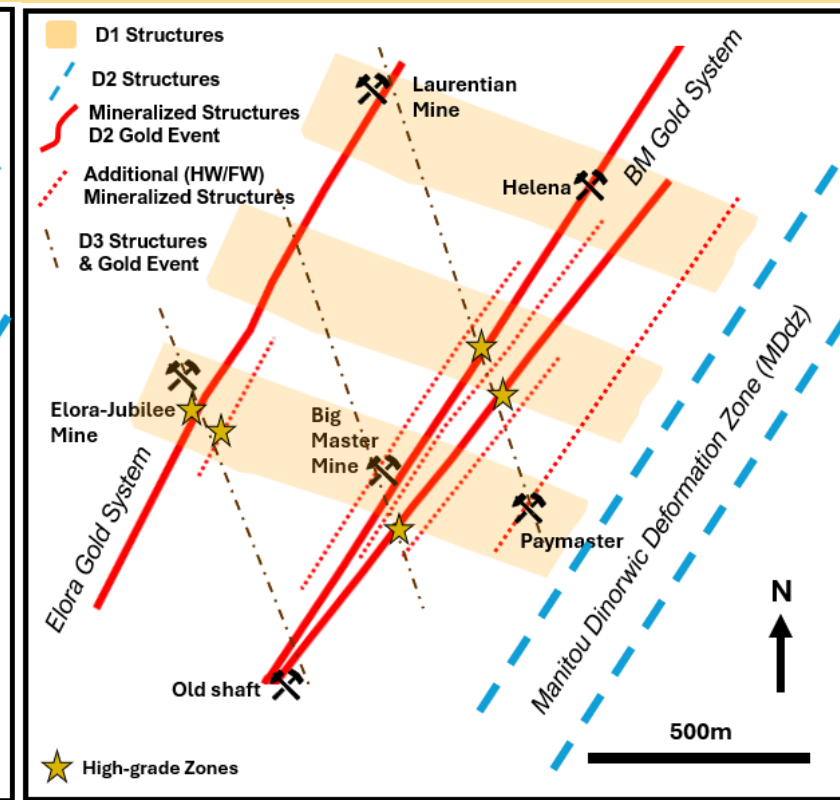
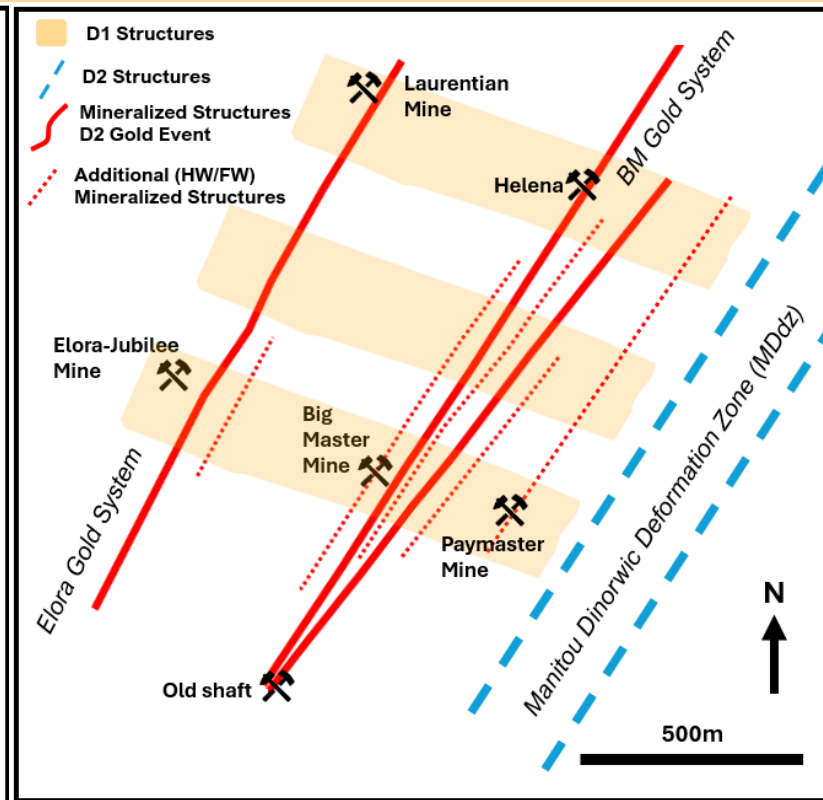
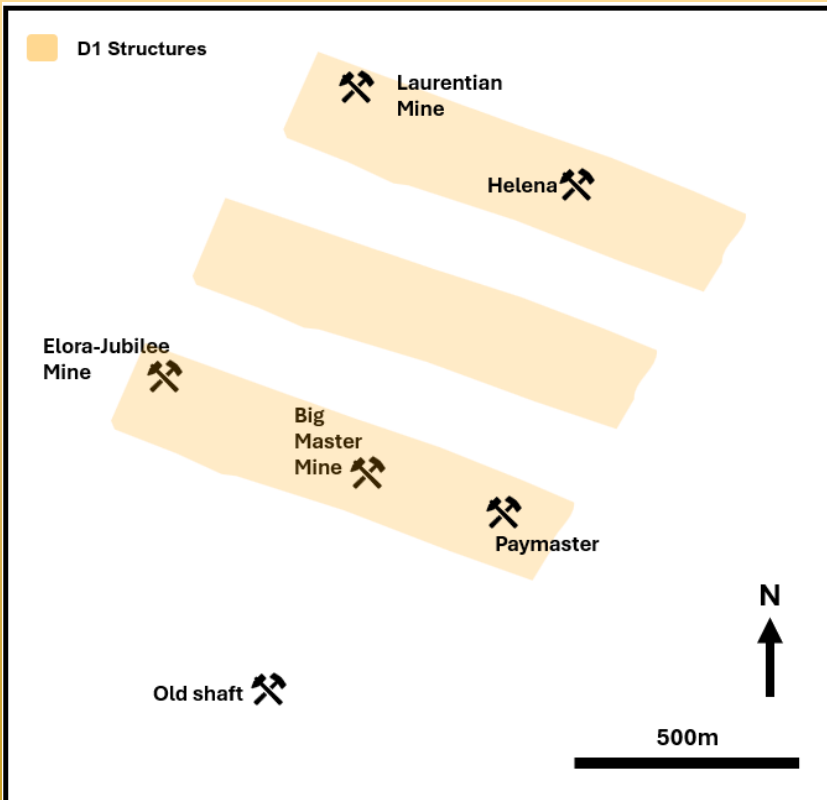
First Deformation Event



Second Deformation
& Gold Mineralization Event



Third Deformation
& Gold Mineralization Event



Note - figures simplified cartoon maps of the interpreted deformation and mineralization history

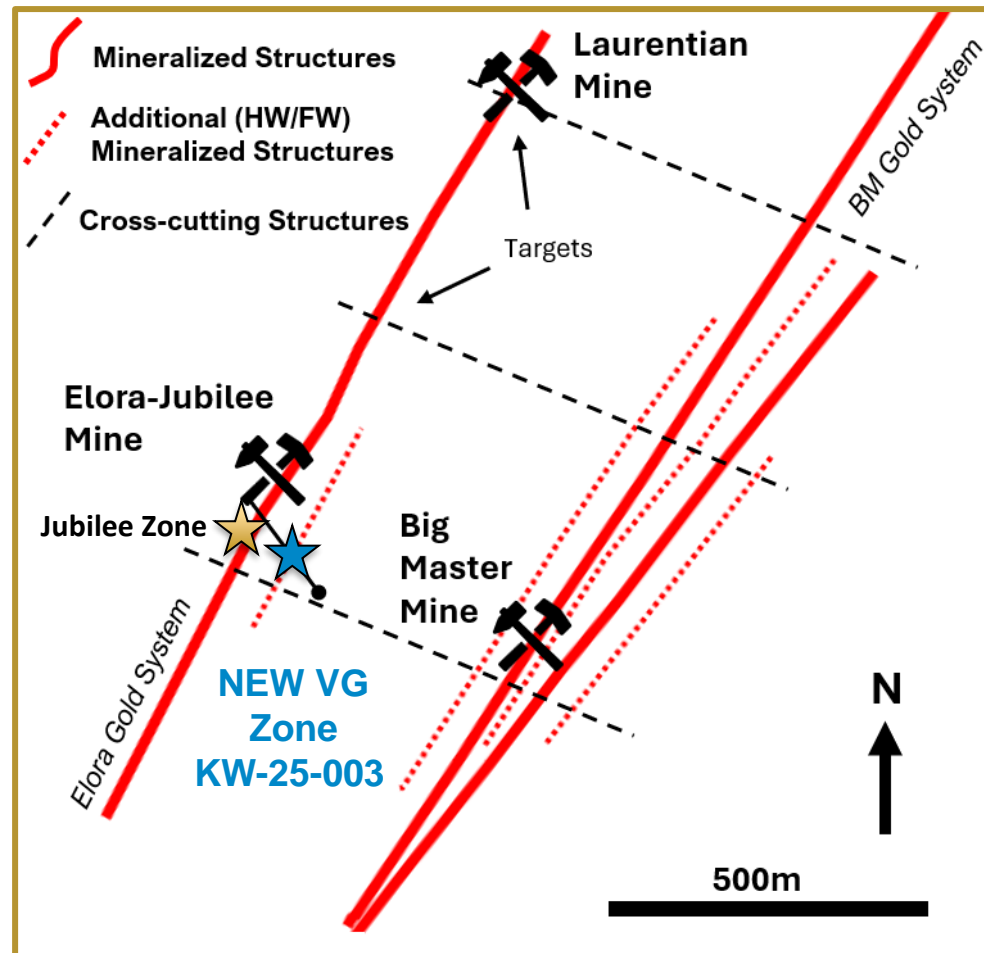
Elora Gold System | NEW Mineralized Structure

Hole **KW-25-003** indicates a **new zone** of hanging wall (parallel)

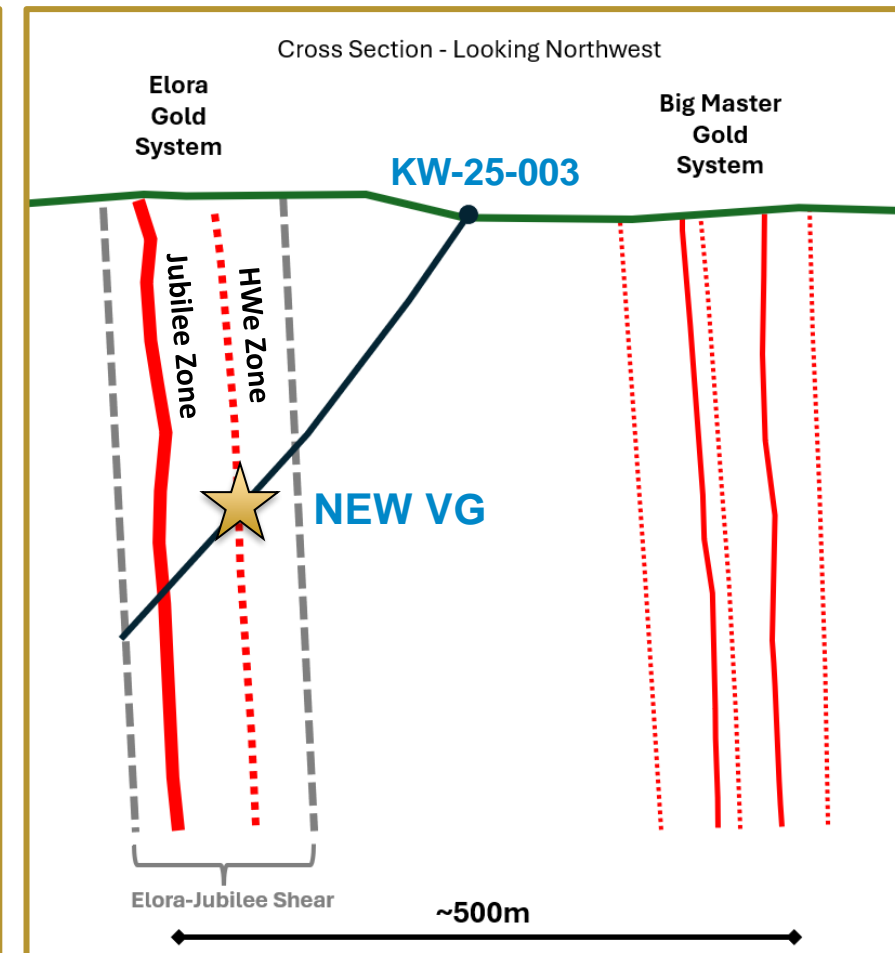
New zone ~80 meters from main Elora zone.

Untested Targets Northeast along strike

Additional parallel mineralized zone on the Big Master Gold System



Map Gold Rock Area



Cross Section Hole KW-25-003

Elora Gold System | NEW Mineralized Structure



Maura J Kolb President of Dryden Gold stated “This new zone is the **most significant amount of VG** that **Dryden Gold has intersected to date.** Hitting this course gold in a parallel hanging wall zone to the main Elora mineralized structure is very exciting and shows more potential for additional zones within the Gold Rock Camp.”

Elora Gold System | Jubilee Zone Expanding Strike & Depth



- Targeting shear basalt with sulphide mineralization & quartz stringer veins
- Testing gold mineralization continuity down plunge and on strike

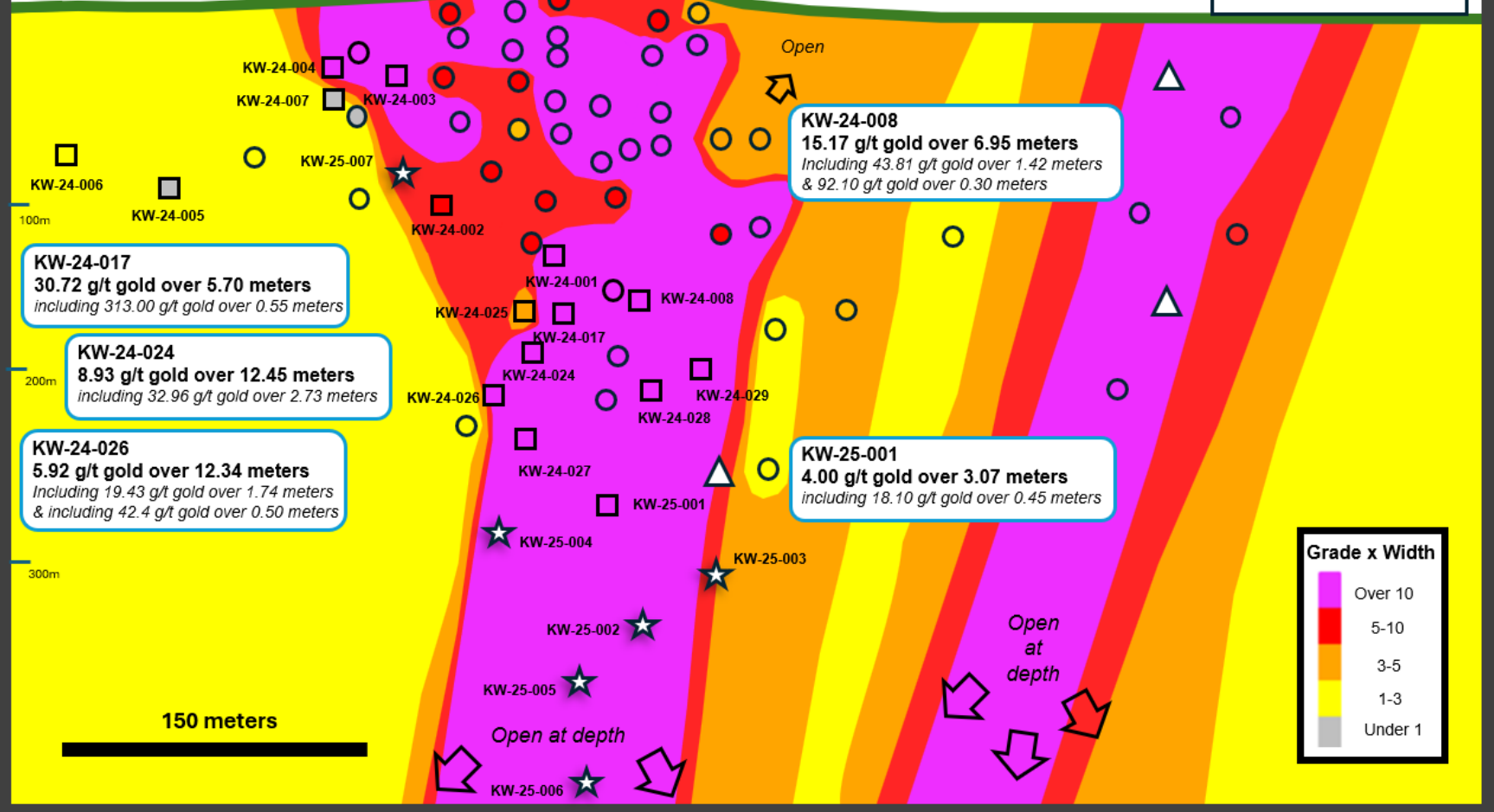


DRYDEN
GOLD CORP

Long Section - Looking Northwest

Legend

- Dryden Gold holes
- Historic Drill holes
- △ Planned Drill holes



DRYDEN
GOLD CORP

Elora Gold System | Laurentian Mine & Intersection Target

Hypotheses -

Gold Mineralization along Northeast trending **shear zones** and **veins structures**

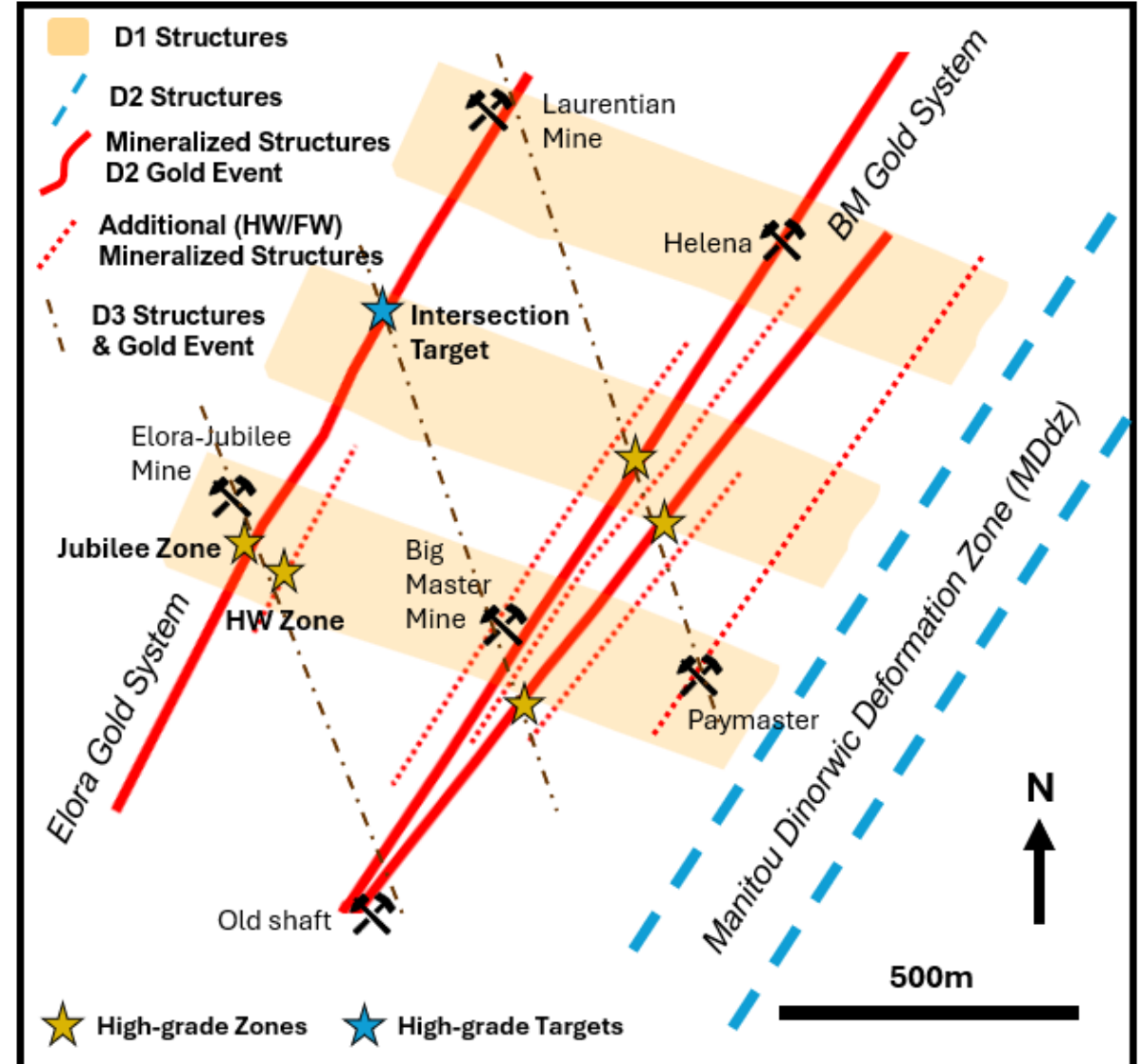
Elora Gold & Big Master Gold Systems

Gold becomes **enriched** further during later deformation event with more gold mineralization along the **North-south structures** and high-grade localizing at these intersections.

Elora Gold System hosted high-grade.

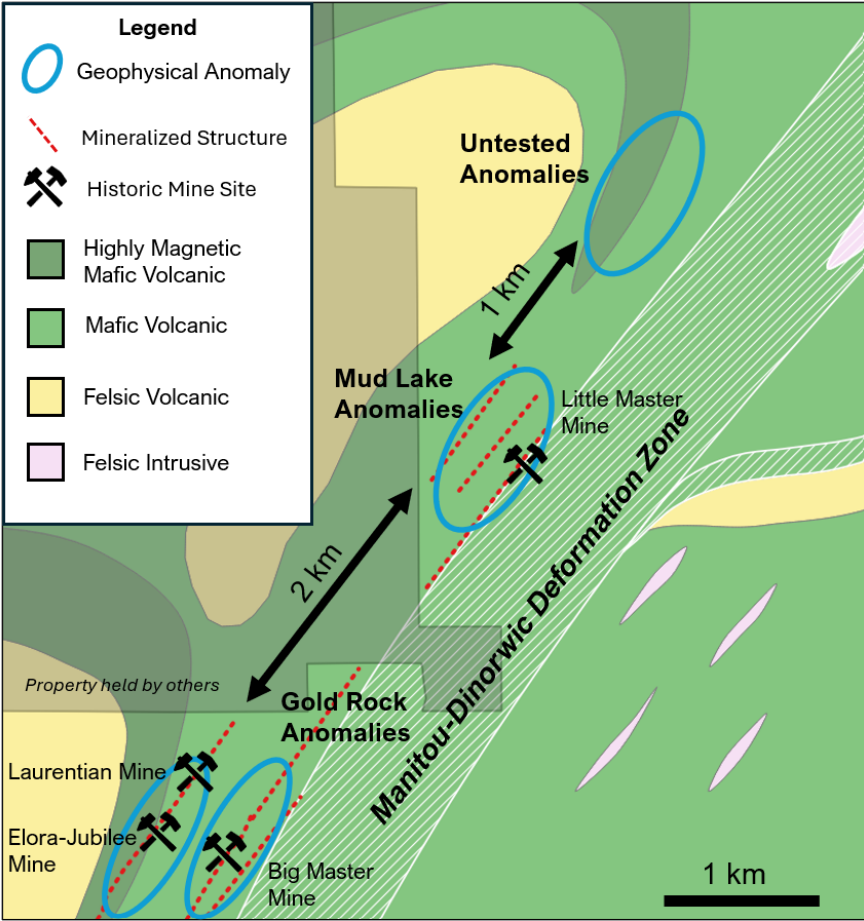
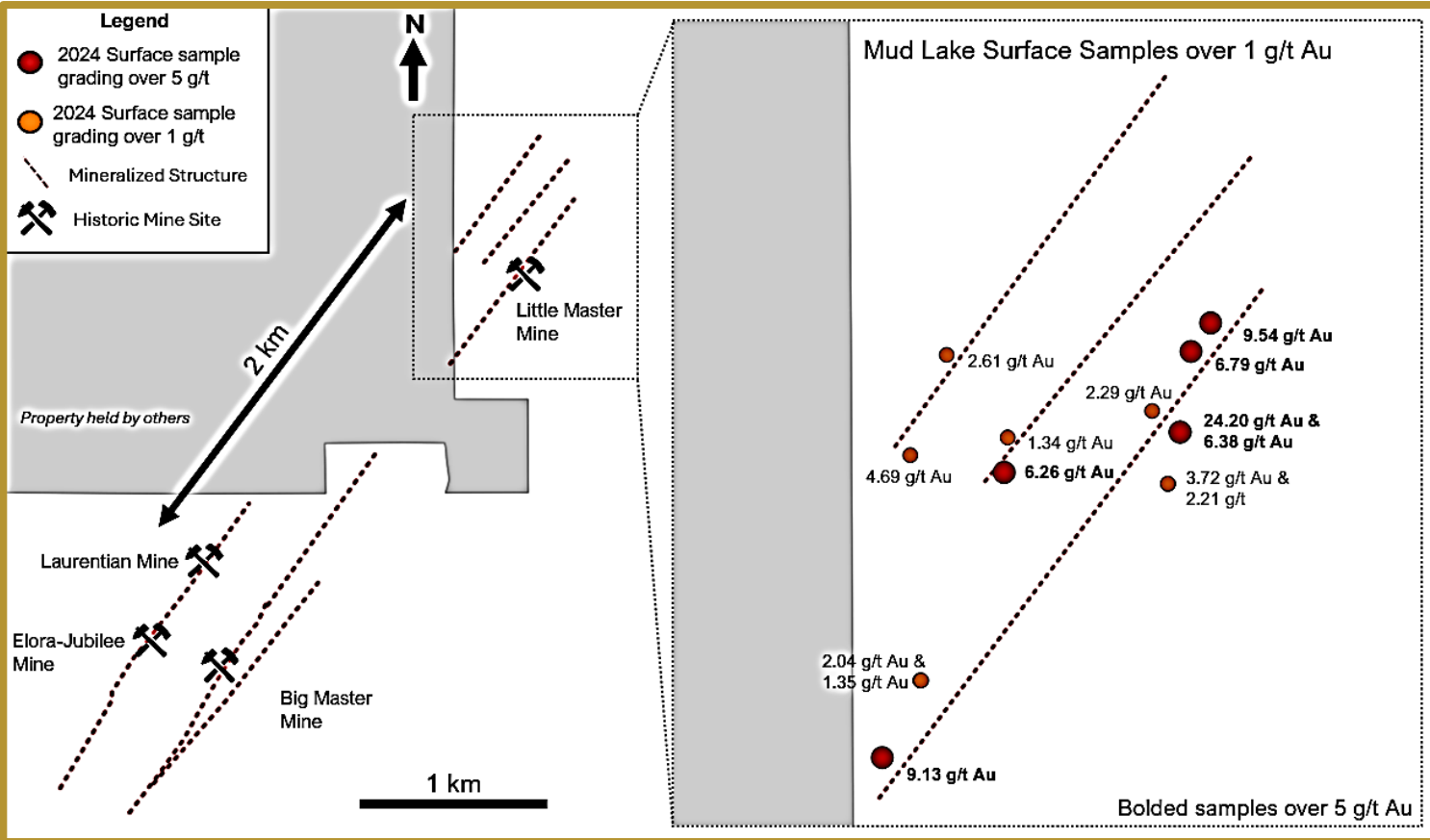
*Laurentian Gold Mine with average grade of **14 g/t gold** and mined to only **140 meters**.*

Laurentian Gold Mine



Gold Rock – Mud Lake Extension

▲ 2024 surface samples returning multiple gold values over 5 g/t (see figures below).



Gold Rock Potential

Red Lake Comparison

Very similar footprint at Red Lake and Gold Rock Camp

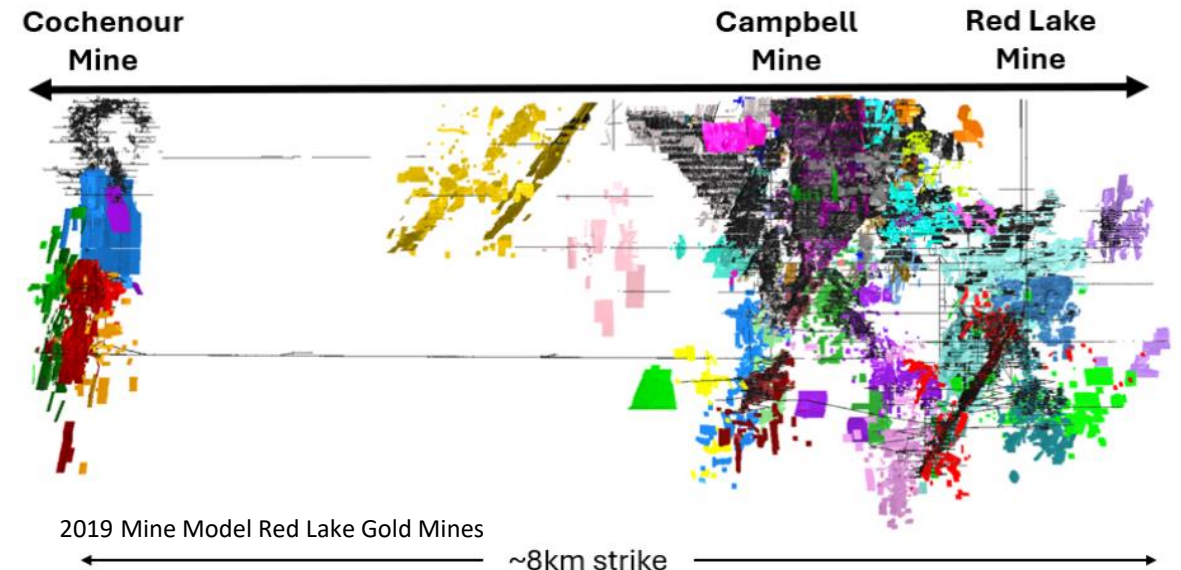
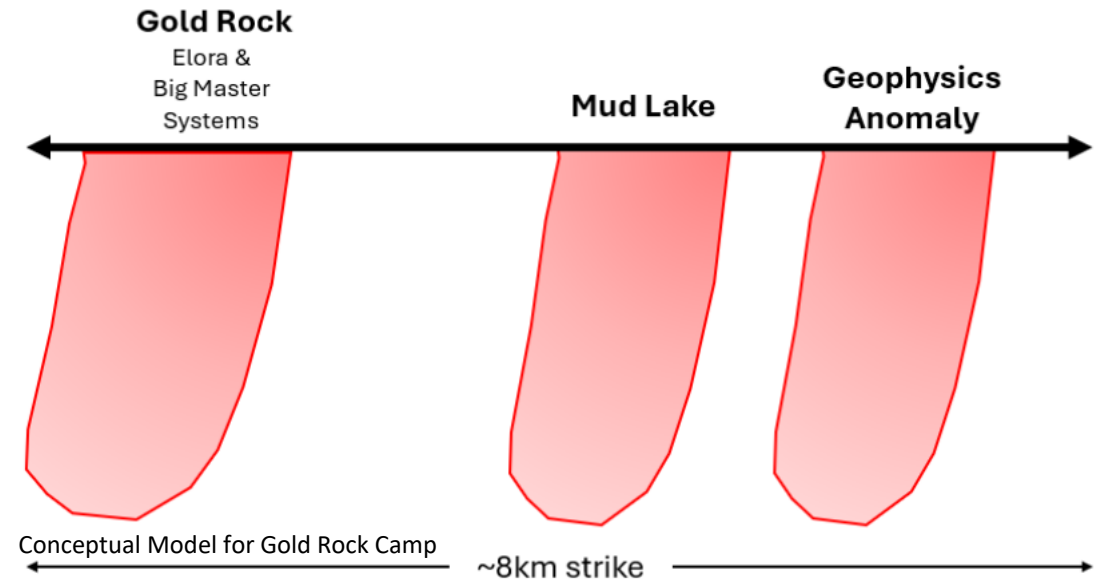
Periodicity to these mineralized areas

Gold Rock, Mud Lake, Anomaly = Red Lake, Campbell, Cochenour

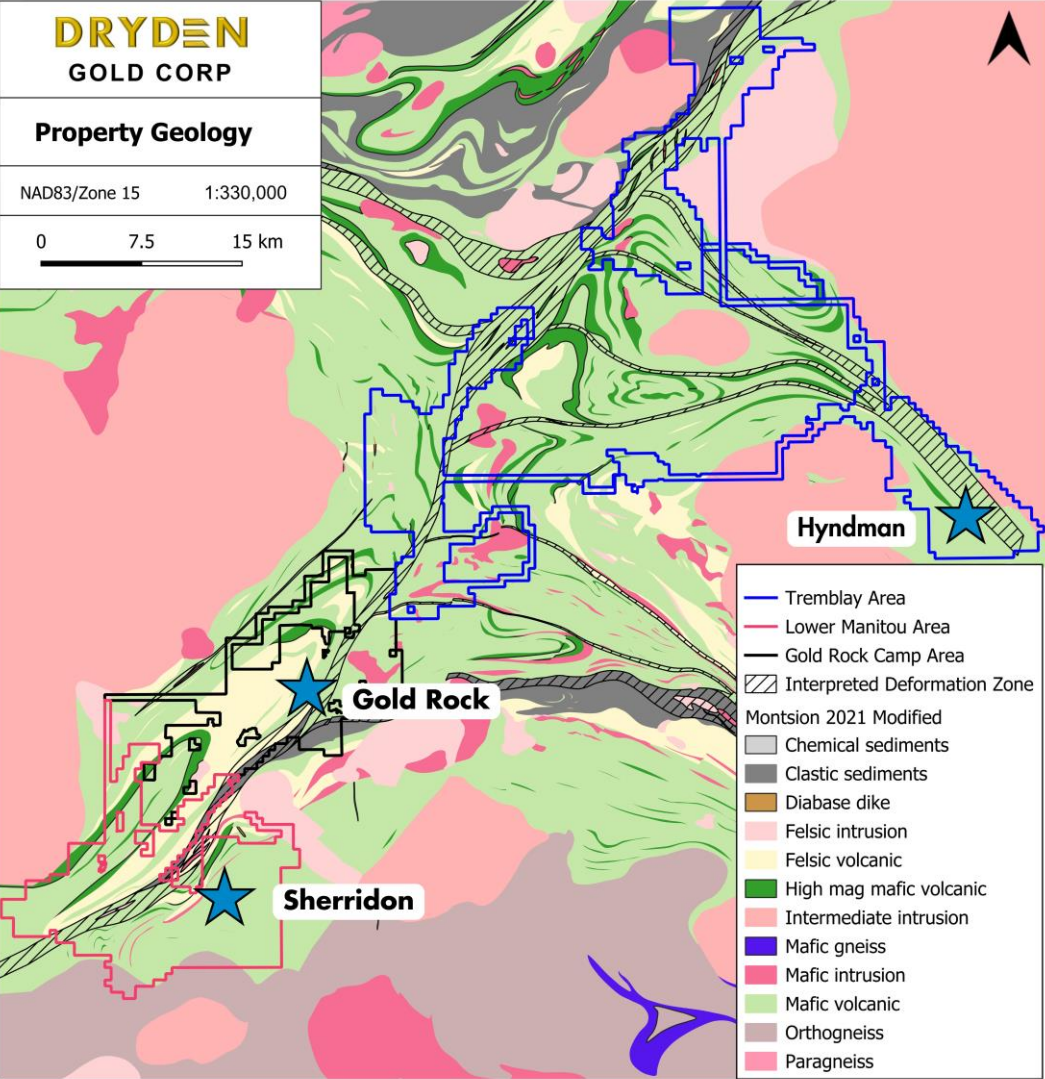
Mineralization expended significantly through deeper exploration at Red Lake

Stacked zones of mineralization in different structural planes at Red Lake & Gold Rock

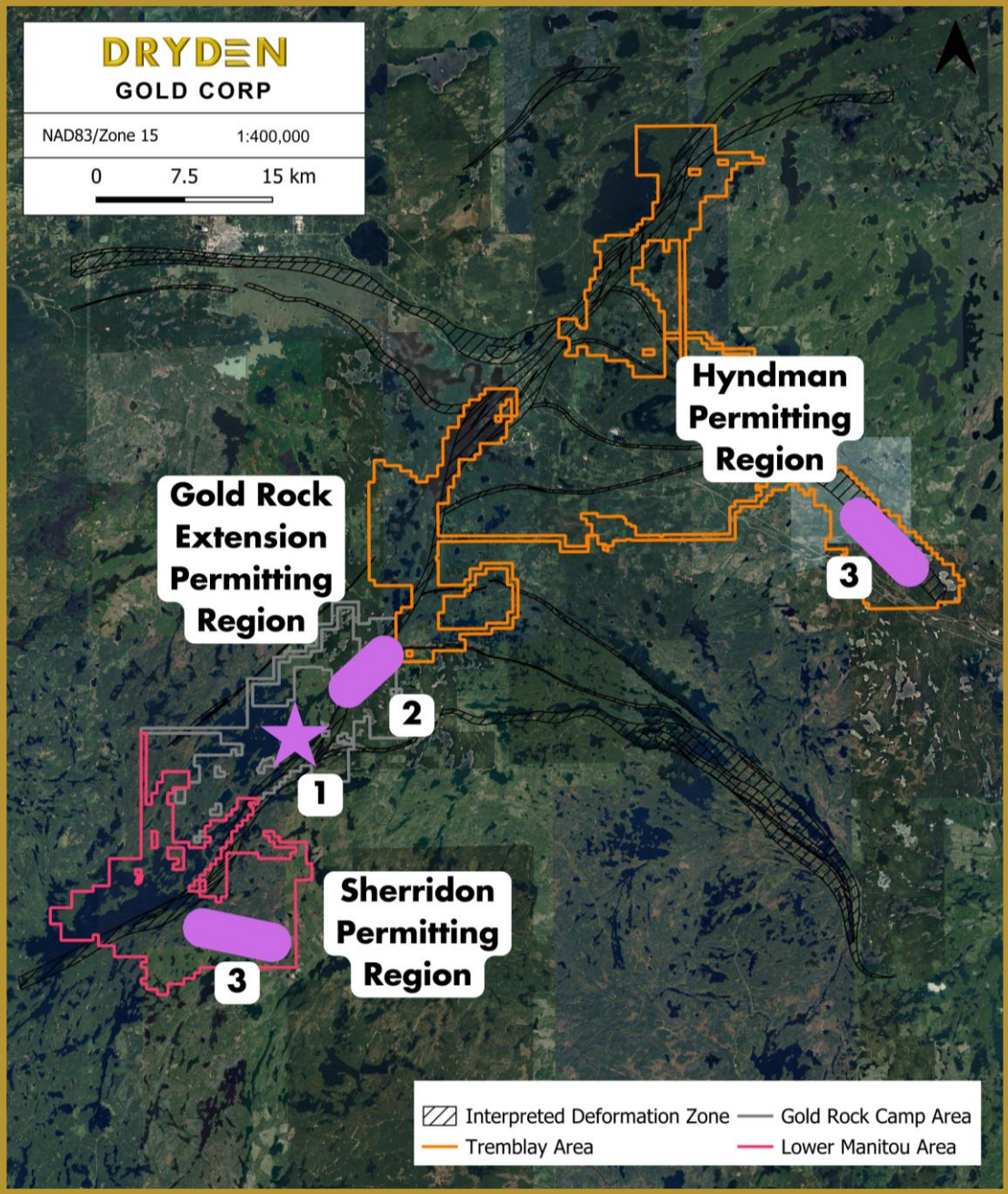
Red Lake discovered through mineralization outcropping on surface like Gold Rock Camp



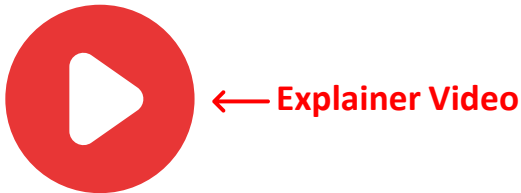
2025 Regional Exploration



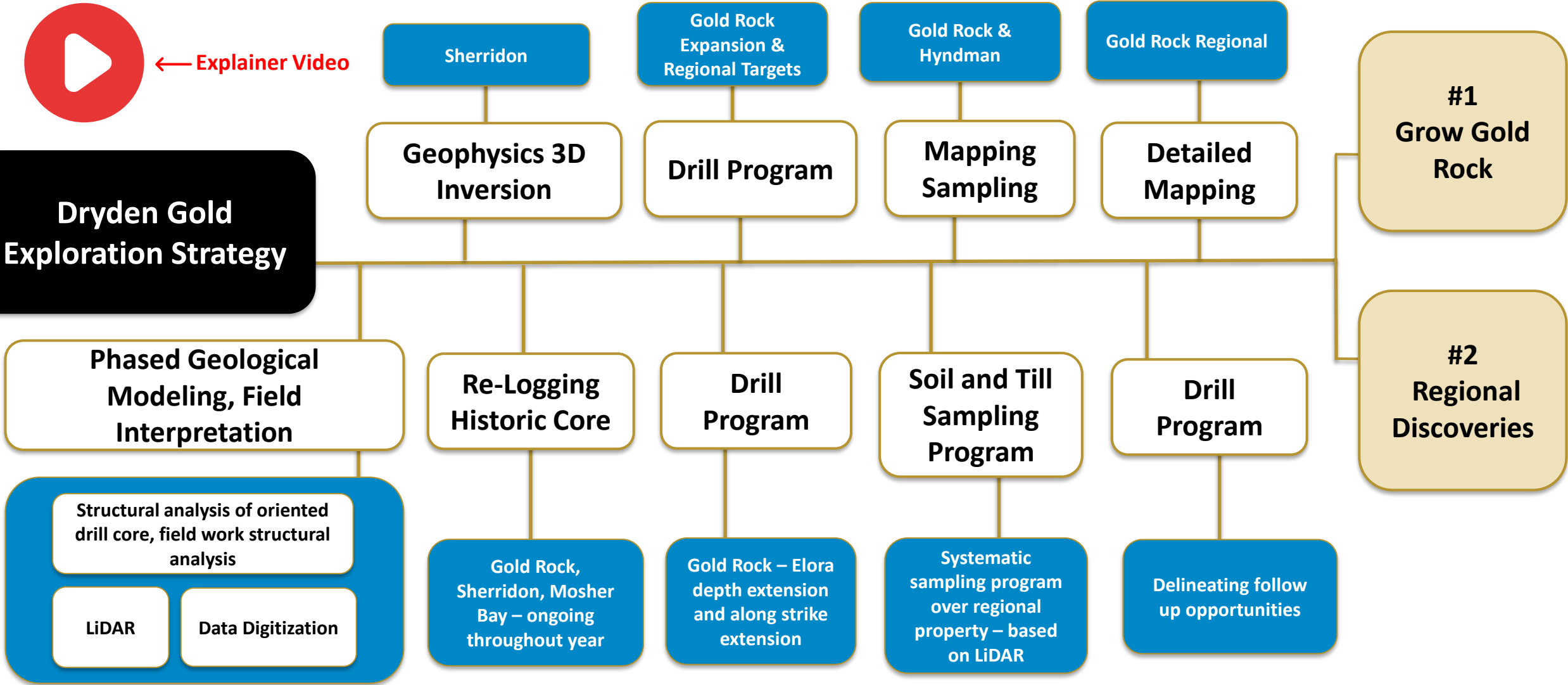
Note: All Permits Received.



2025 Exploration Strategy



Dryden Gold Exploration Strategy



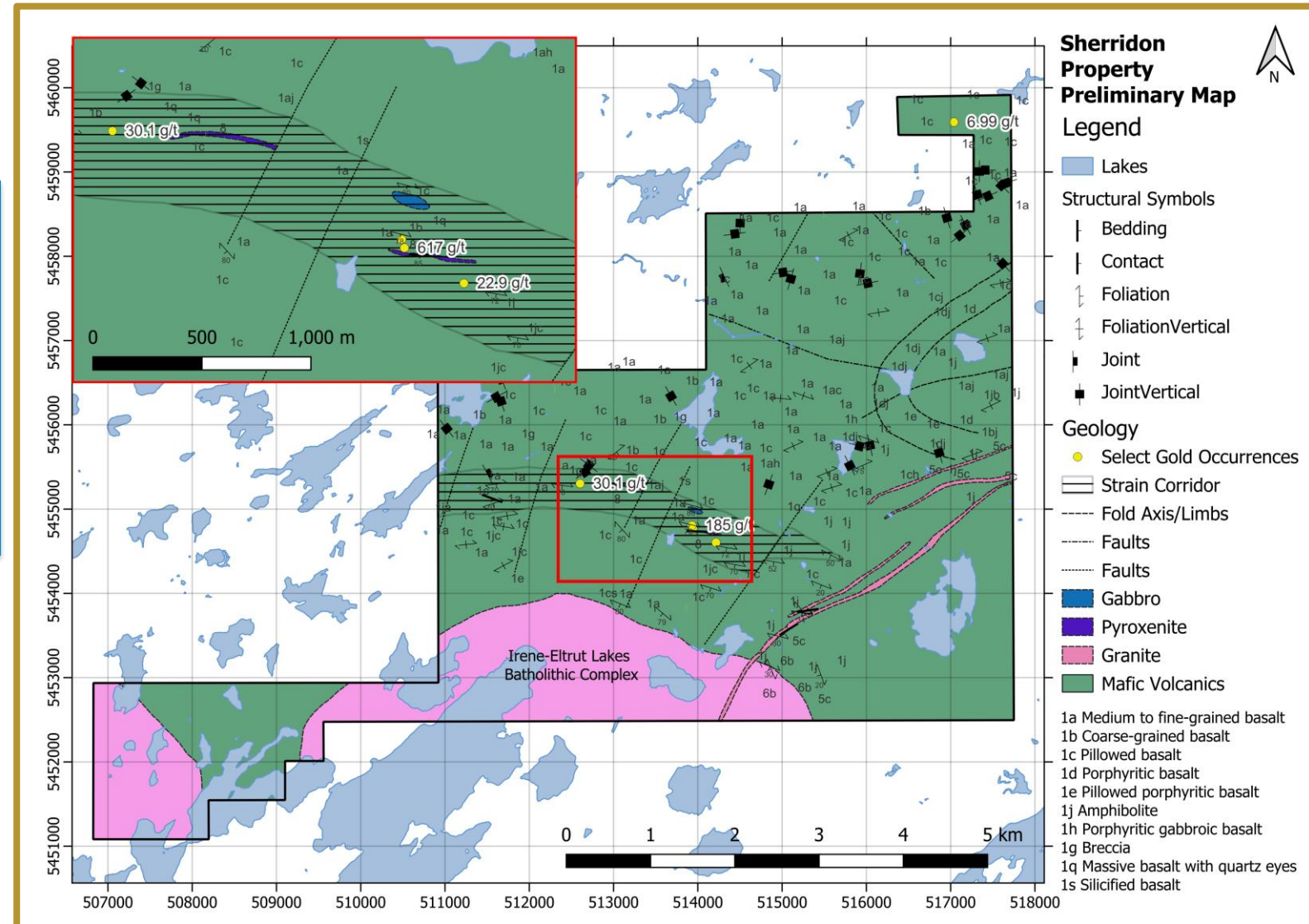
Sherridon Regional Exploration

- Historical data compilation highlighted high-grade historical surface samples and drill results.

Highlights:

- 617.00 g/t gold surface sample
- Several surface samples over 100.00 g/t gold
- 15.40 g/t gold over 5.50 meters including 83.70 g/t gold over 1.00 meters in drill hole SH-12-25

- Mineralization related to geophysical anomaly – magnetic high.
- 2024 mapping program to get a better understanding of the stratigraphic layers, geophysical anomalies and structural setting.

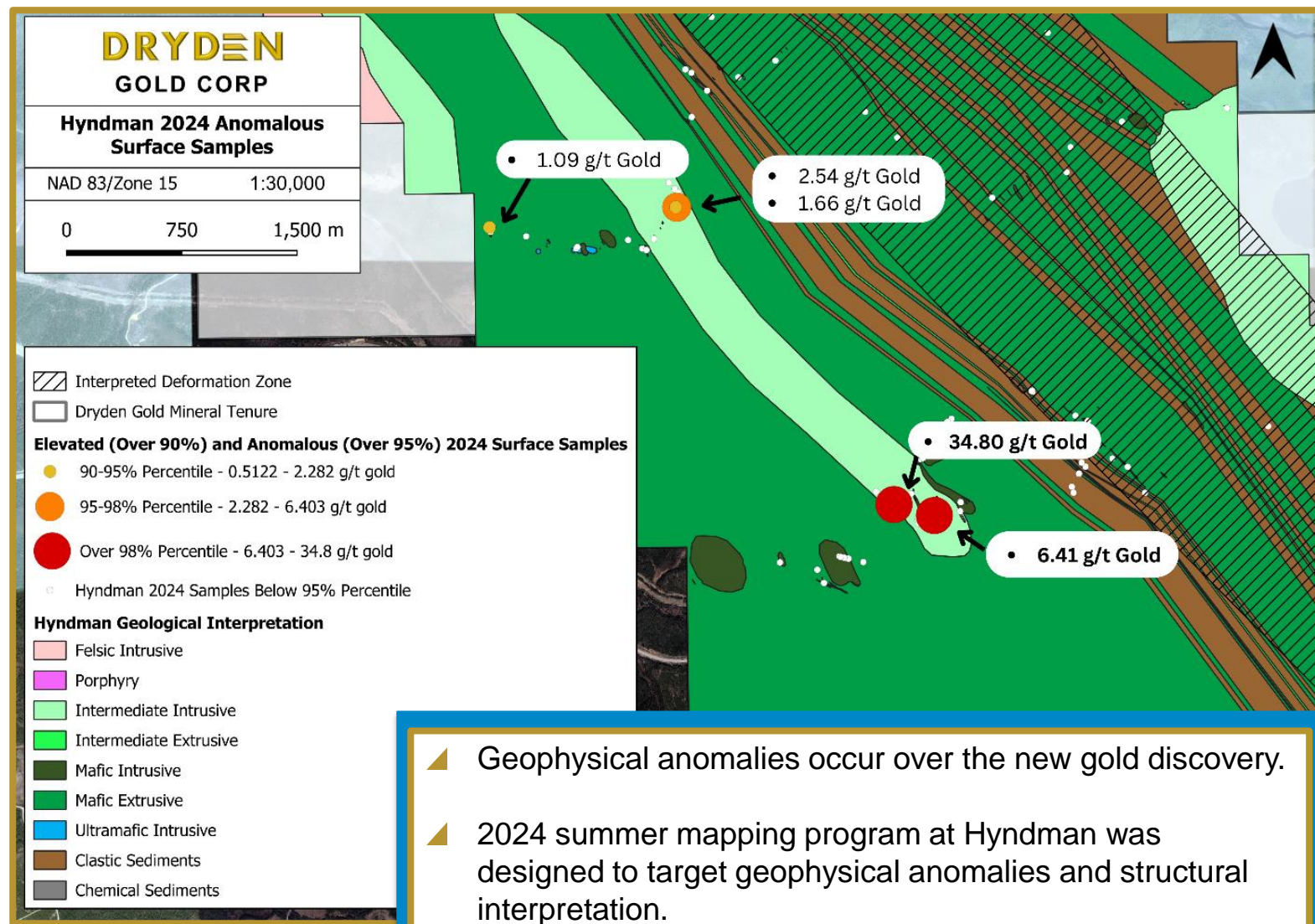
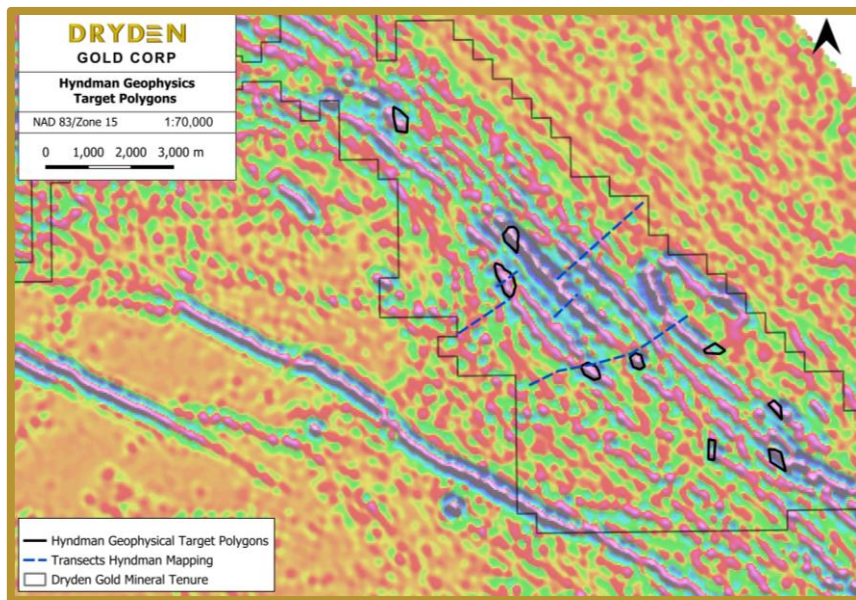


DRYDEN

GOLD CORP

Hyndman 2024 Results

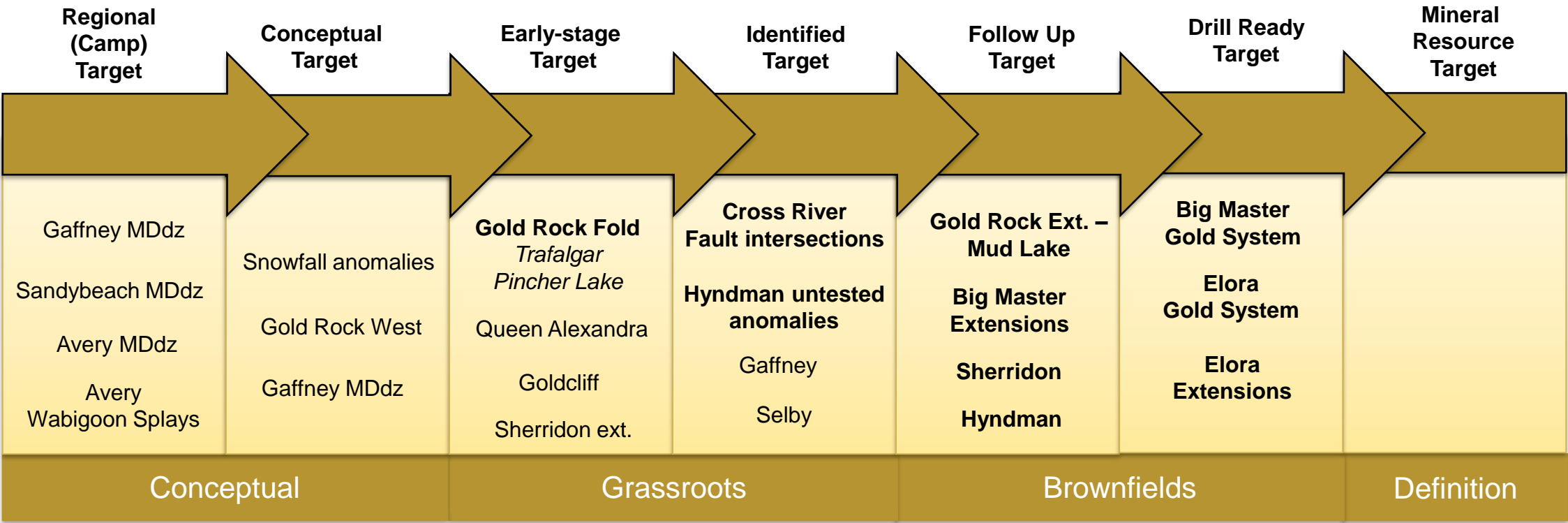
- 2023 reconnaissance program discovered new gold showing with 4 samples returning gold values higher than **10.00 g/t gold**.
- 2024 Geophysics study highlighted several more geophysical anomaly targets, similar to the new discovery.



- Geophysical anomalies occur over the new gold discovery.
- 2024 summer mapping program at Hyndman was designed to target geophysical anomalies and structural interpretation.

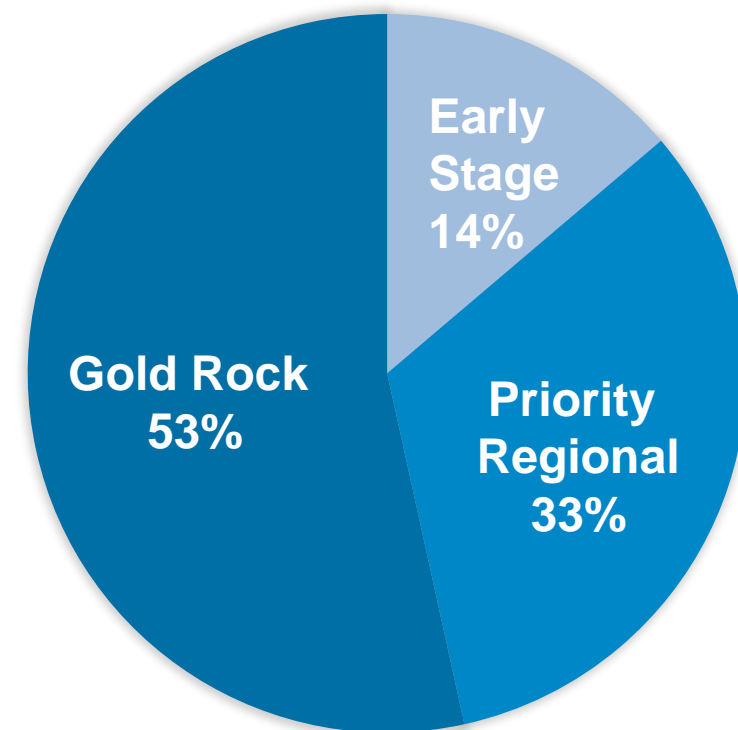
Dryden Gold's Resource Pipeline

- ▲ 2025 Exploration Emphasis on **Gold Rock Camp** Targets.
- ▲ Several Regional targets at Identified and **Follow up** stages will be further worked on during 2025.



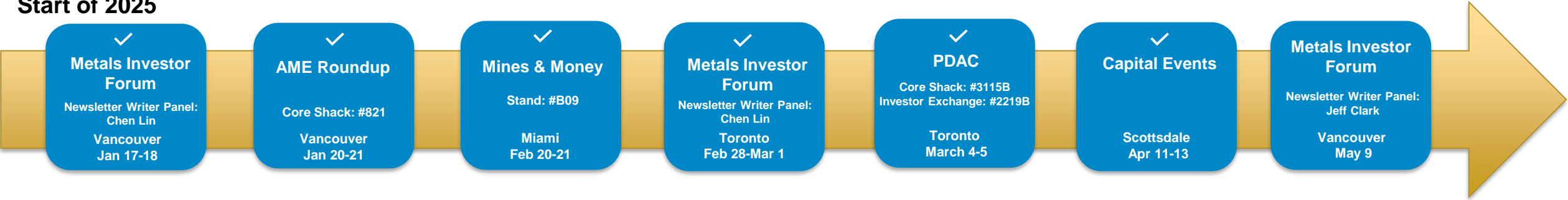
Exploration Budget 2025 | Use of Proceeds – \$5.8M

Item	Property	Cost (\$CAD)
LiDAR	All properties	\$100,000
Till/Soil Geochemical Survey	All properties	\$700,000
Geophysics 3D Inversion	Priority Regional Targets <i>Sherridon, Gold Rock expanded, other</i>	\$250,000
Mapping & Sampling	Priority Regional Targets <i>Gold Rock, Hyndman, Sherridon</i>	\$700,000
Channel Sampling	Priority Regional Targets <i>Gold Rock, Hyndman, Sherridon</i>	\$150,000
Drilling	Gold Rock	\$1,500,000
Drilling	Gold Rock Extension	\$1,600,000
Drilling	Priority Regional Targets <i>Gold Rock, Hyndman, Sherridon</i>	\$800,000

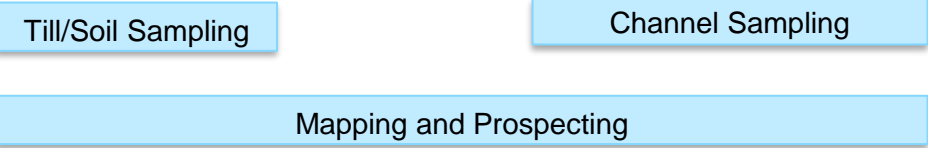


2025 Outlook

Start of 2025



Close of 2025



Why Dryden Gold?

- ▲ The Property
- ▲ The Team
- ▲ The High-Grade Gold
- ▲ The Geology
- ▲ The Jurisdiction
- ▲ The Infrastructure
- ▲ The Shareholders

The Next Red Lake?





DRYDEN

GOLD CORP

TSXV: DRY | OTCQB: DRYGF
DRYDENGOLD.COM

Contact:

Trey Wasser CEO & Director
+1 (940) 368-8337
twasser@drydengold.com

Maura Kolb President & QP
+1 (807) 632-2368
mjkolb@drydengold.com



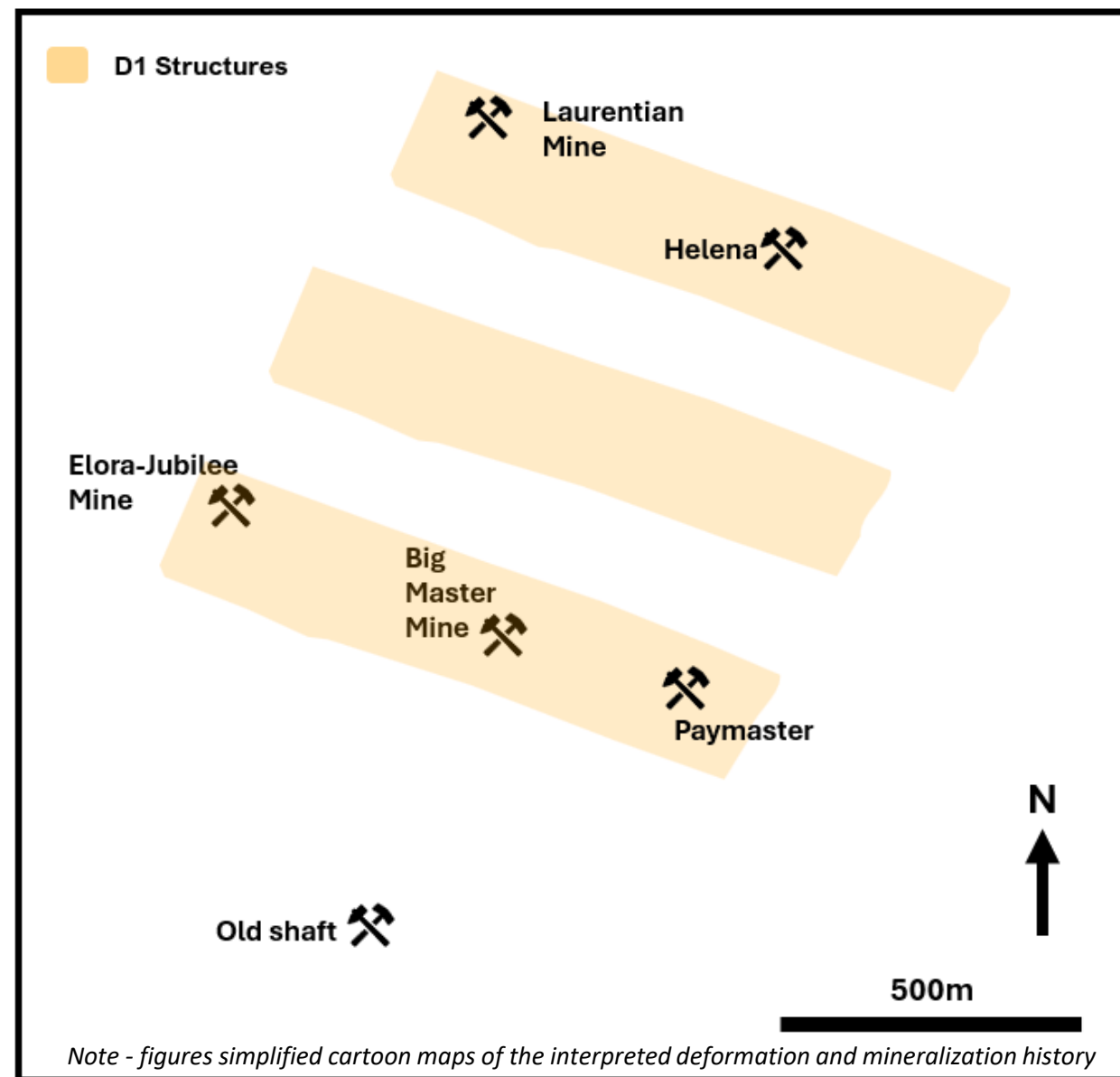
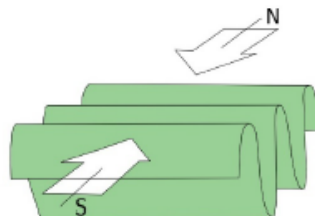
Gold Rock | Targeting High-Grade Structures

Stage #1

Deformation events shaped the **geometries** at Gold Rock and the emplacement of **Gold**

D1 - The first phase of deformation created **folding** and **~east-west trending structure**

D1 – Preparation of rocks for future mineralization through **alteration** and **early mineralization** in some areas



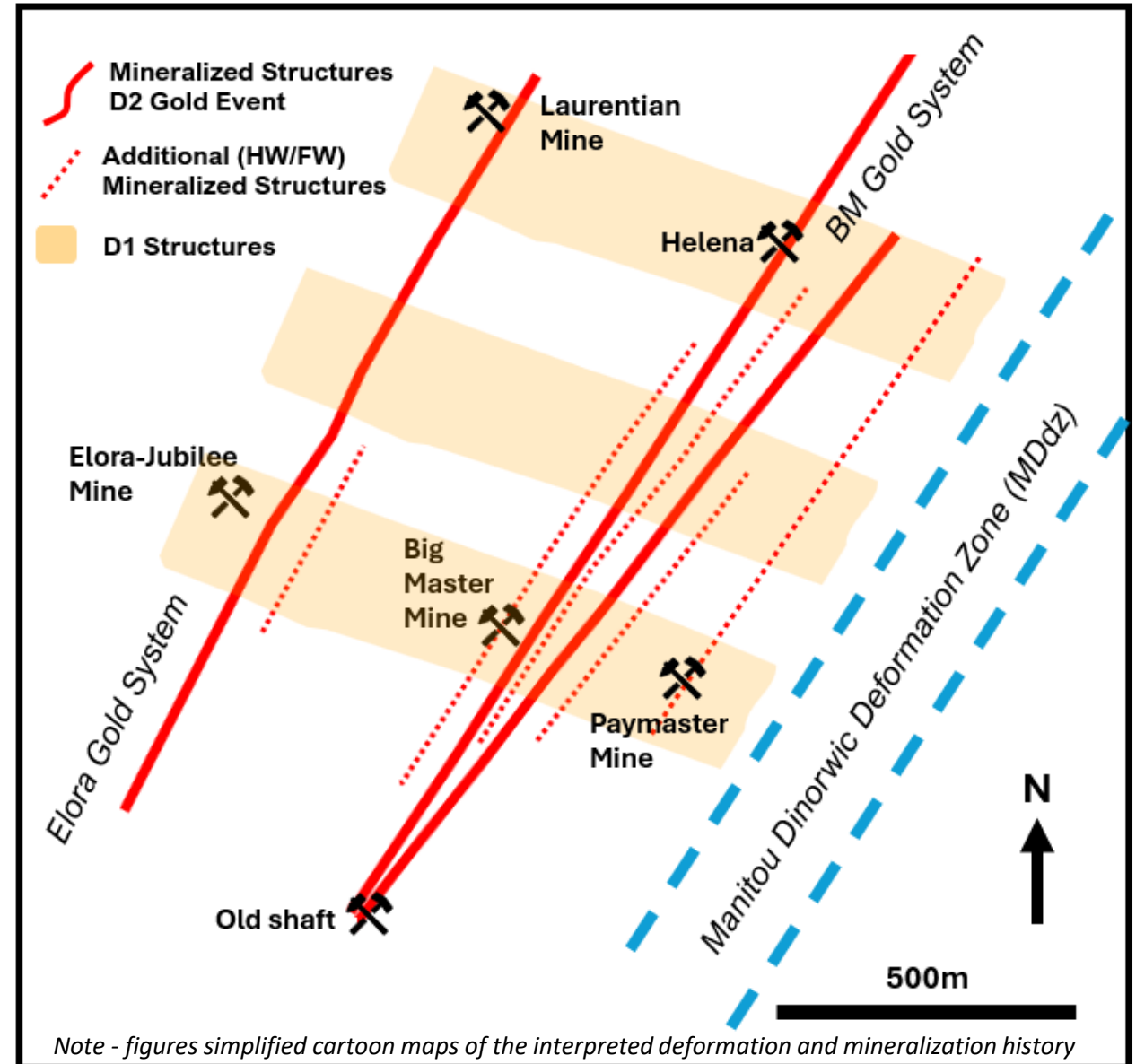
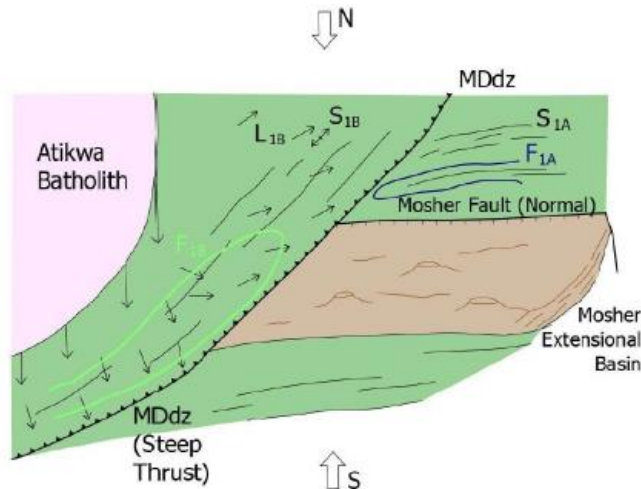
Gold Rock | Targeting High-Grade Structures

Stage #2

D2 - The second phase of deformation created
Manitou Dinorwic deformation zone (MDdz)
Northeast trending structures

D2 – **Gold Mineralization** along Northeast
trending **shear zones** and **veins structures**
Elora Gold & Big Master Gold Systems

Continent-Arc
Collision
Peak Metamorphism
Local Extension



Gold Rock | Targeting High-Grade Structures

Stage #3

D3 - The third phase of deformation created S-C fabric with the
~ **North-south structures**

D3 – Gold Mineralization in this phase reused previous structures and localized high-grade new ~**North-south structures**

Sinistral Strike-slip
Basin Closure
Creation of S-C Fabric

